

# Magnetizing Coil for Testing of Railway Wheels (Ø 700-1200mm)



## Scope of supply

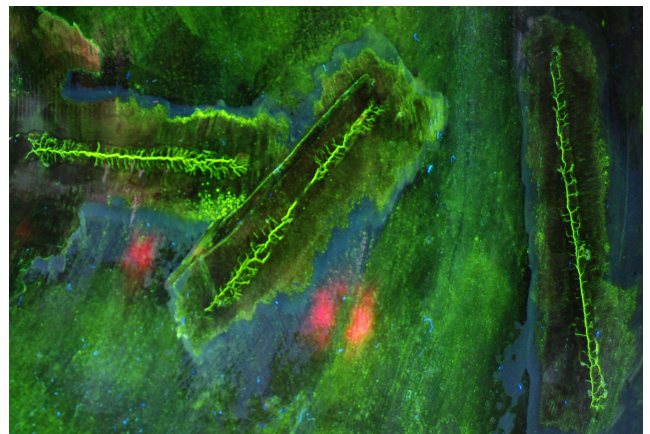
- Heavy duty magnetizing coil for railways wheels, Ø1.000 mm
- Floor collecting tank for test material with drain cock
- High-current power pack
- Transport car for the complete test system
- Test material tank with integrated pump
- Spraying system (adapted to magnetizing coil)

## Technical Data

Testing: Railway wheel with effective diameter up to 1.200 mm

### High-current power pack:

- 400V, 50Hz, fuses 2x32A time-lag (CE 5x32A)
- test current choice by multiple contact switch with 6 steps
- test current: : AC 1500 A<sub>eff</sub>/2000 A<sub>peak</sub>
- duty cycle 80%
- high power, 7.5 KVA
- 2 high-current cables each 2.0 m , cross section 150 mm<sup>2</sup>
- remote control of the device by means of foot-actuated switch



**Detection of an artificial flaw  
 (breaking of copper filler metal)**